

BridgeRoad
DEVELOPMENTS LTD.



CHATEAU VILLA

MARTENSVILLE, SK



www.chateauvilla.ca

CHATEAU VILLA

MARTENSVILLE, SK

Your New Lifestyle Awaits You!





SUITE FEATURES

Spacious Suites

Plenty of Natural Light

Large Kitchens with Walk-in Pantry

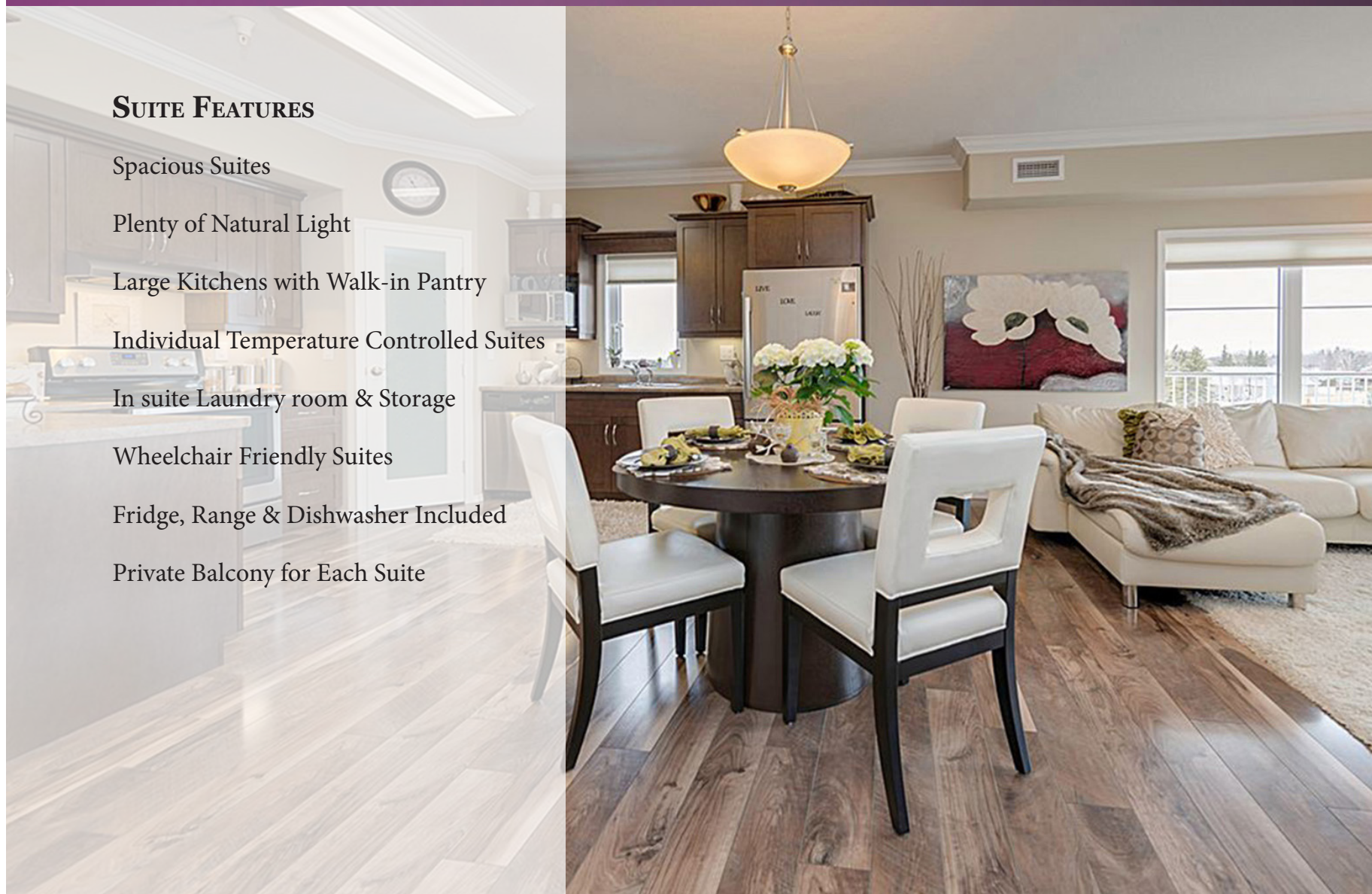
Individual Temperature Controlled Suites

In suite Laundry room & Storage

Wheelchair Friendly Suites

Fridge, Range & Dishwasher Included

Private Balcony for Each Suite



SAFETY & SECURITY

Safe, Friendly Community Living

Interconnected Fire Alarm System

Security Entrances Controlled from Each Apartment

Firewalls Built For Your Safety

Engineered Sound Resistant Walls



Terri Hetterly
306-249-1917

Erin Sackman
306-281-4475



FEATURED AMENITIES:

Central Elevator for Convenience & Ease

Guest Suite Available

One Simple Monthly payment
(Includes heat, water, power & rent)

Heated Indoor Parking & Storage Available

Common Room with Full Kitchen

Shared Spaces for Sharing Hobbies

Bright Glass Sunroom attached to Common Room



Terri Hetterly
306-249-1917

Erin Sackman
306-281-4475



COST OF LIVING IN A HOUSE

Home Valued	\$200,000.00	\$300,000.00	\$400,000.00	My House
Property Taxes	\$2,200.00	\$2,700.00	\$3,200.00	_____
Heating	\$1,900.00	\$2,000.00	\$2,100.00	_____
Electrical	\$1,600.00	\$1,700.00	\$1,800.00	_____
Insurance	\$800.00	\$900.00	\$1,000.00	_____
Water	\$1,000.00	\$1,100.00	\$1,200.00	_____
Maintenance	\$3,500.00	\$4,000.00	\$4,500.00	_____
(Lawn mower, snow blower, shingles, flooring, paint, hot water tank, etc.)				
Lost Income	\$10,000.00	\$15,000.00	\$20,000.00	_____
(For return on value of home @ 5%)				
<hr/>				
Total Costs per Year	\$21,000.00	\$27,400.00	\$33,800.00	_____
<hr/>				
Total Costs per Month	\$1,750.00	\$2,283.00	\$2,816.00	_____



Terri Hetterly
306-249-1917

Erin Sackman
306-281-4475



FAQs

1. What is included in my rent?

One monthly payment will include heat, power, water, rent, taxes and maintenance. Each suite is furnished with a fridge, range, dishwasher and window coverings.

2. Is there heated indoor parking available?

Ground level garage space, complete with additional storage is available for \$100.00 per month.

3. Is there outdoor parking available?

Yes there are outdoor parking stalls available for \$40 monthly. Each stall is equipped with an electrical outlet.

4. Is there visitor parking?

Visitor parking is provided.

5. Are children allowed?

We are happy to see children visiting our residents and even staying for short periods of time, however this is an Adult Community and our policy does not allow children to be residents or stay for extended periods.

6. Is there air conditioning?

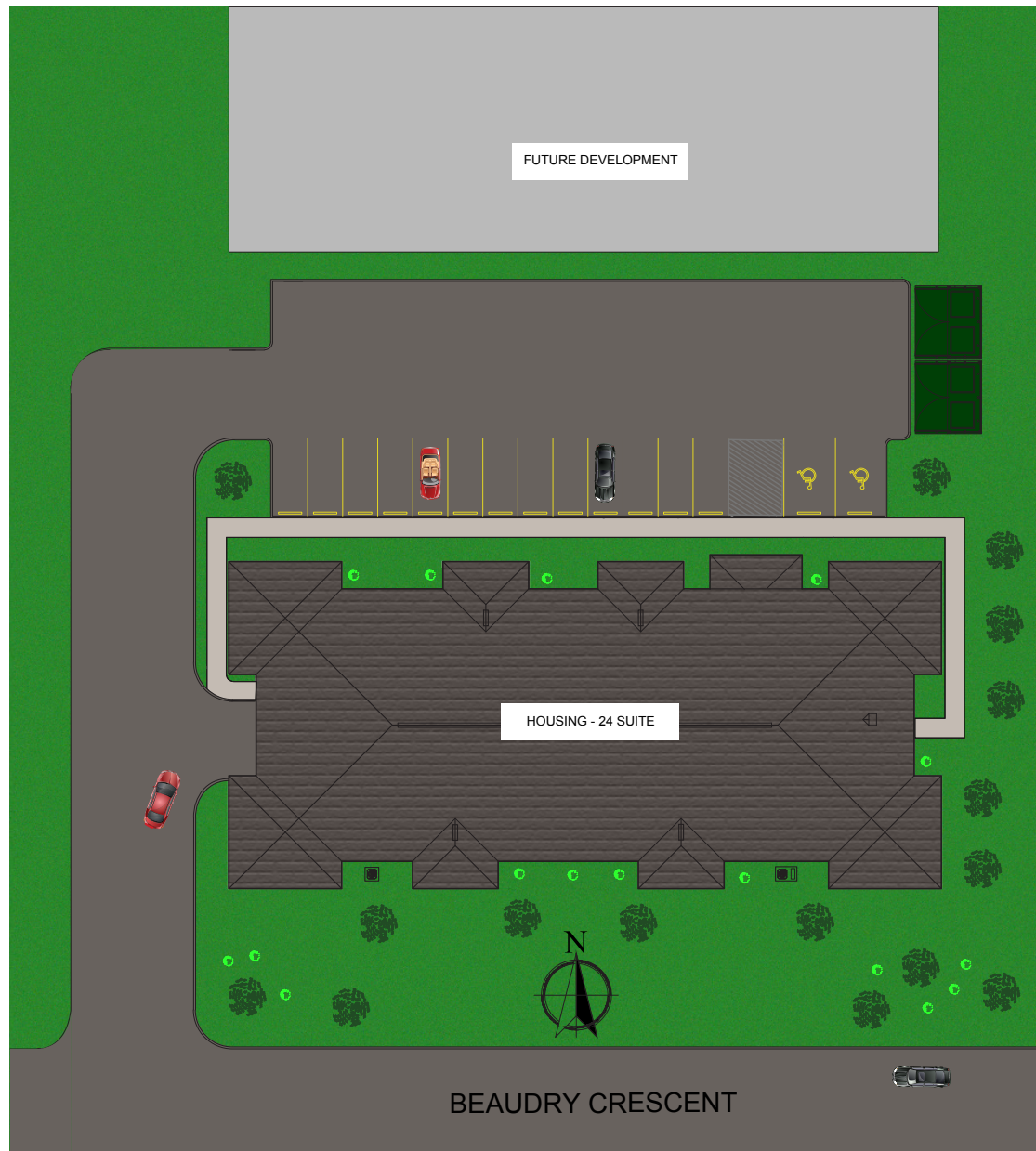
Yes, there is forced air heating and central air conditioning in all suites and common areas.



Terri Hetterly
306-249-1917

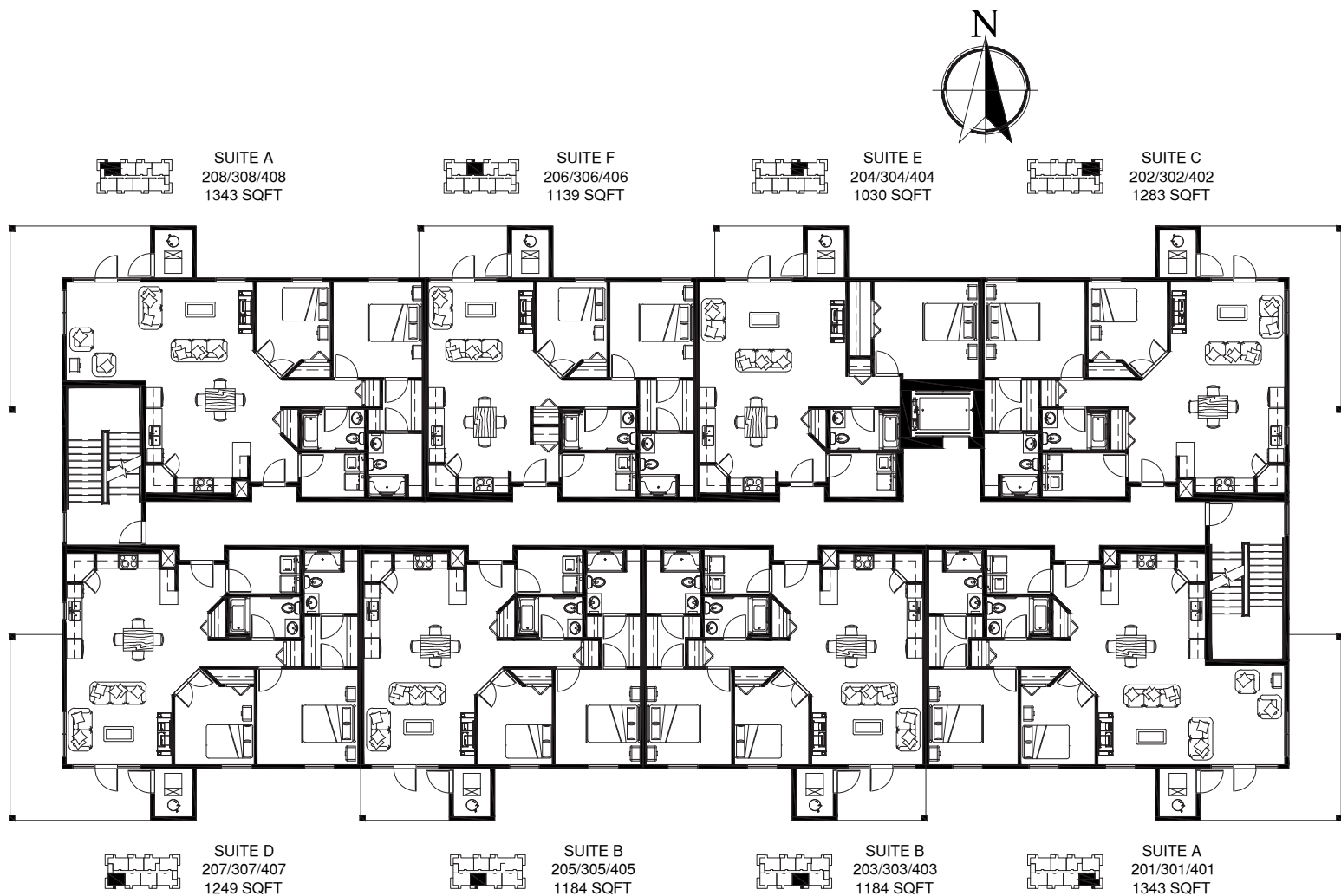
Erin Sackman
306-281-4475

SITE DEVELOPMENT PLAN



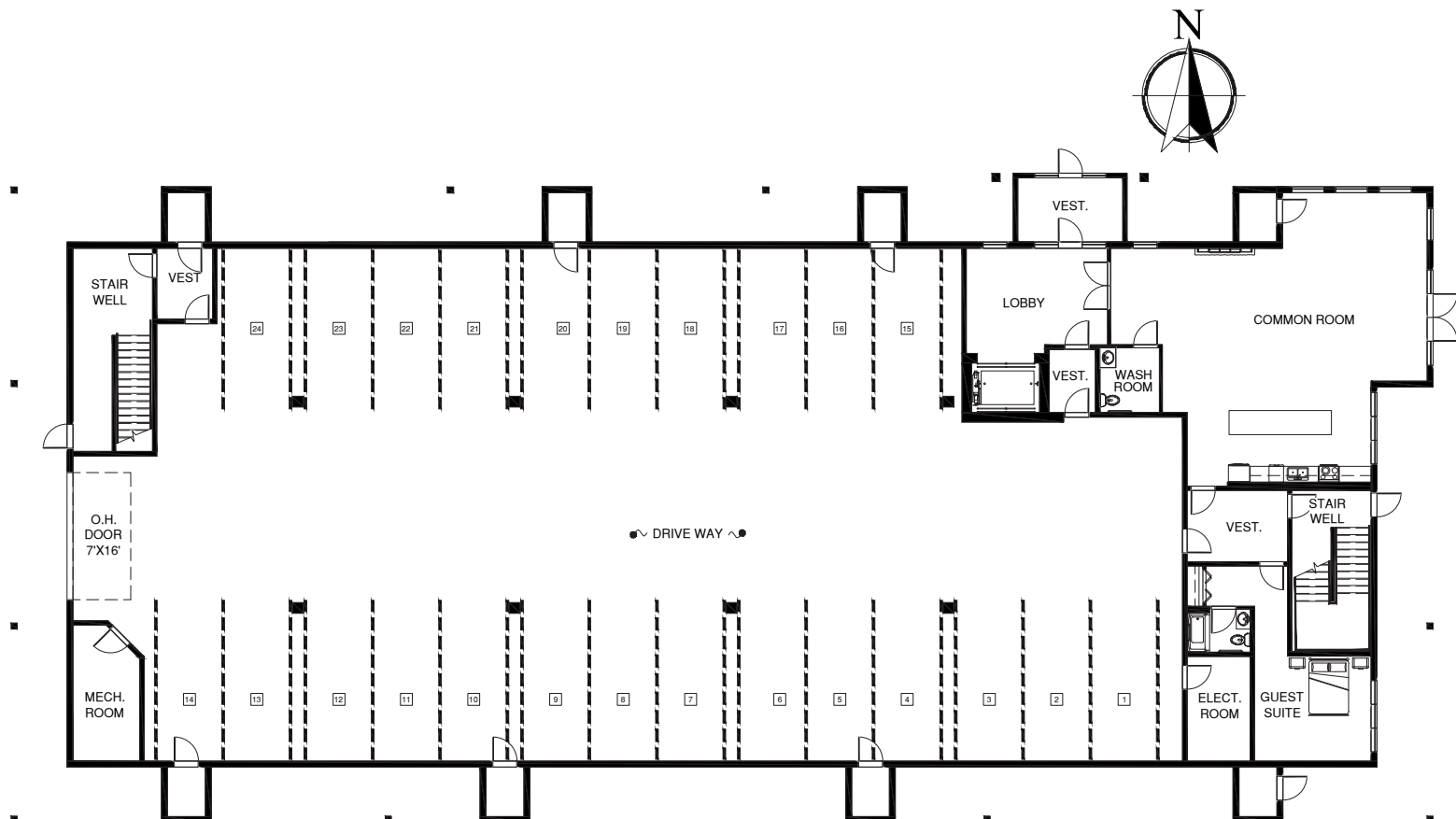
*Note: Floor plans show approximate room sizes only.
Final designs may vary slightly from those shown.*

24 UNIT FLOOR LAYOUT



*Note: Floor plans show approximate room sizes only.
Final designs may vary slightly from those shown.*

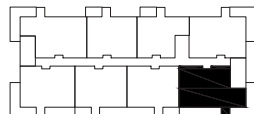
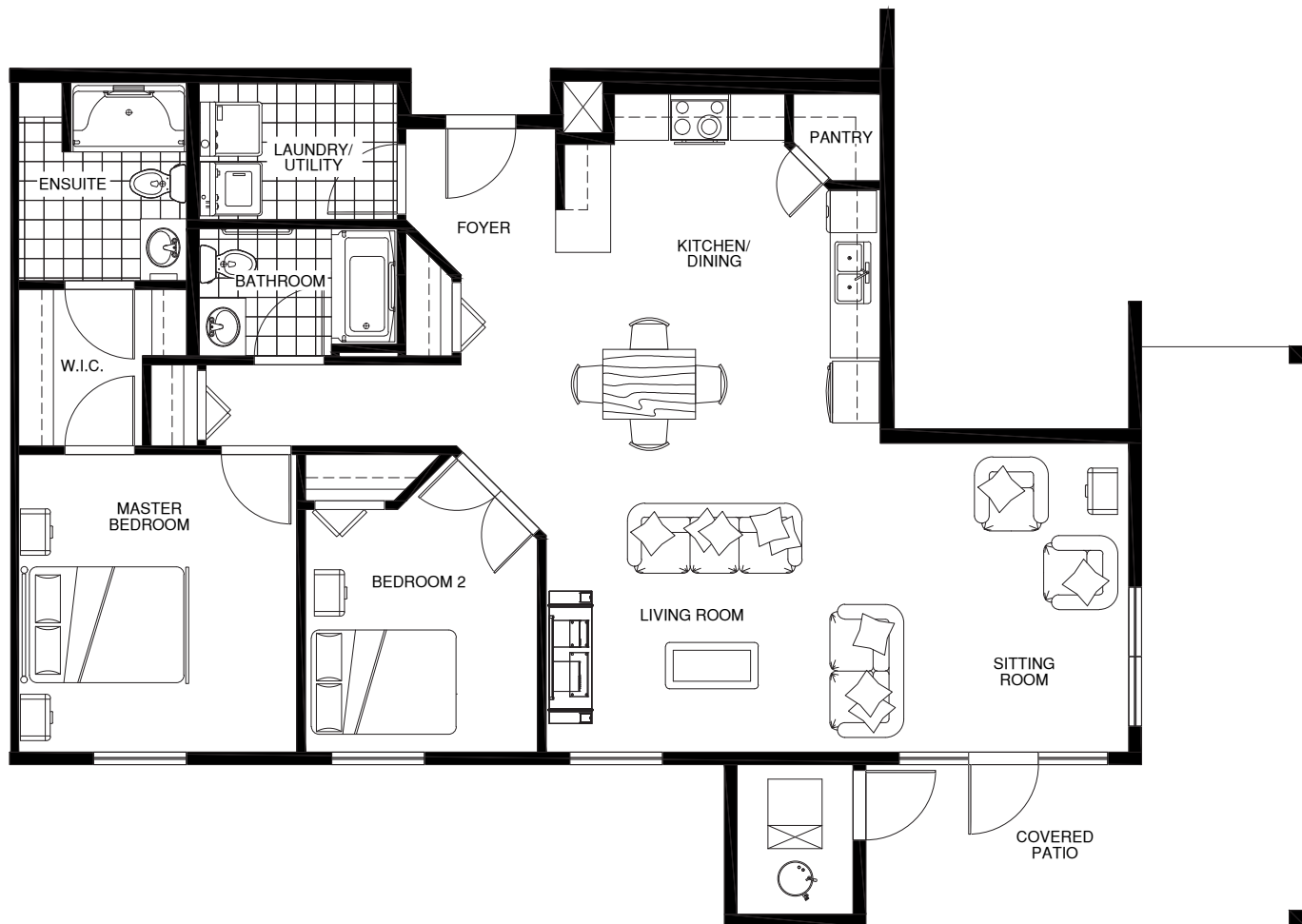
24 UNIT GARAGE LAYOUT



*Note: Floor plans show approximate room sizes only.
Final designs may vary slightly from those shown.*

SUITE A FLOOR PLAN 1,343 SQ FT

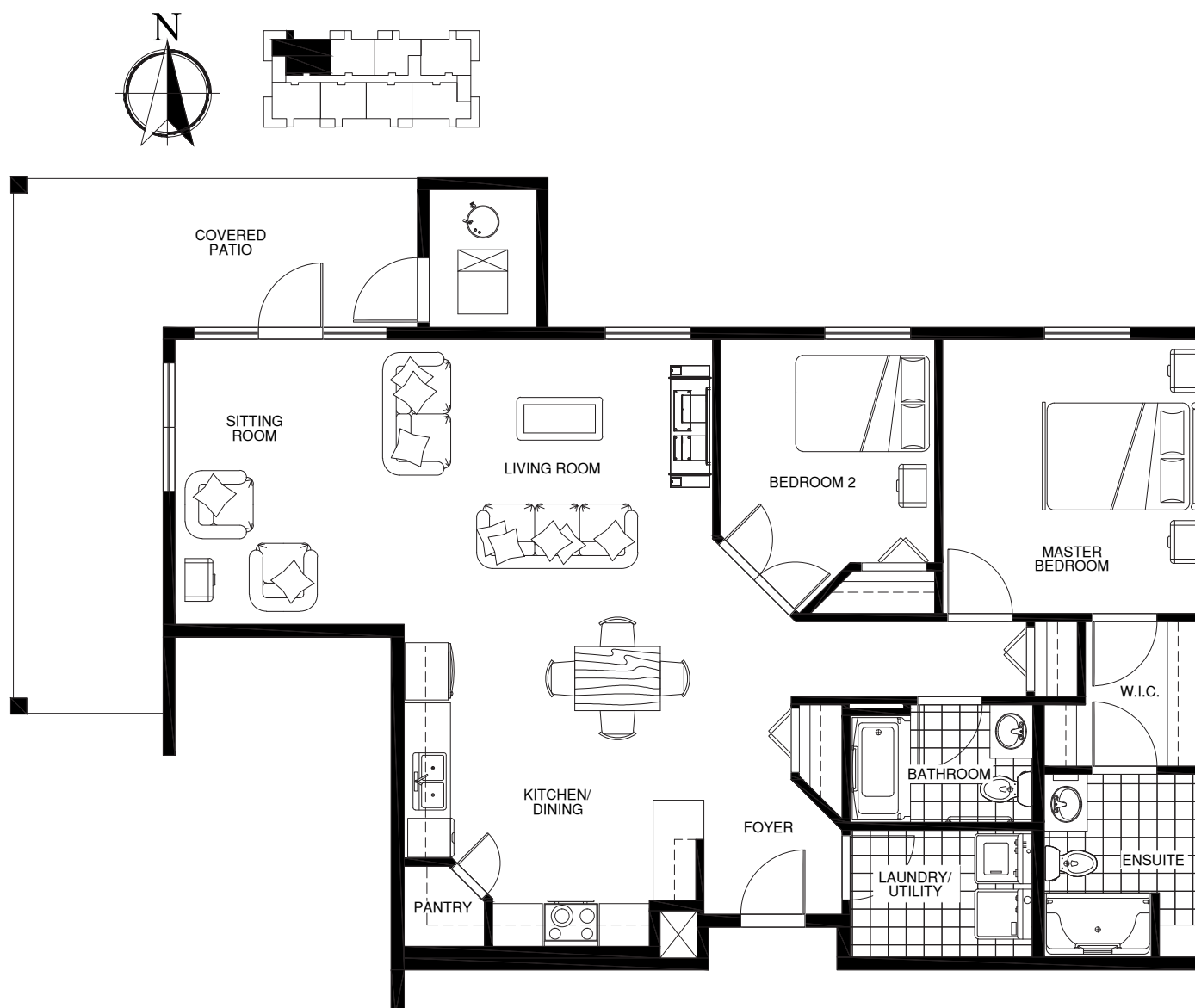
Suite Numbers: 201, 301, 401



*Note: Floor plans show approximate room sizes only.
Final designs may vary slightly from those shown.*

SUITE A FLOOR PLAN 1,343 SQ FT

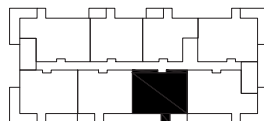
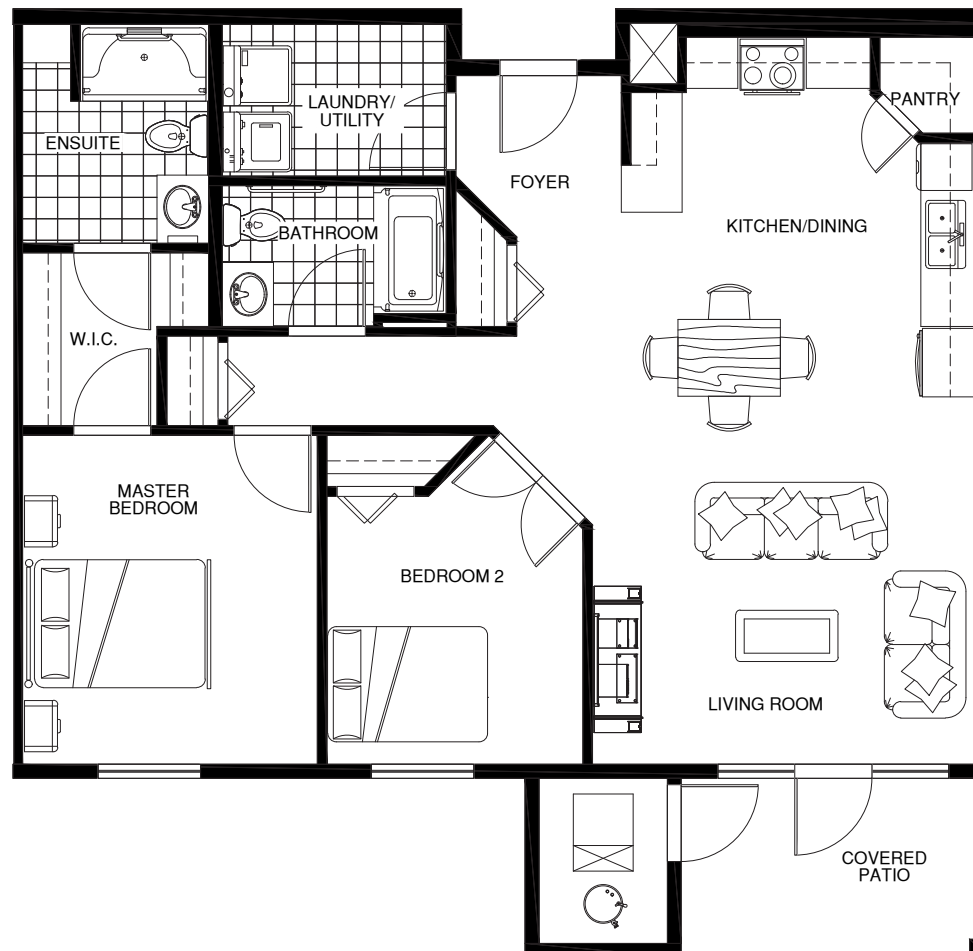
Suite Numbers: 208, 308, 408



*Note: Floor plans show approximate room sizes only.
Final designs may vary slightly from those shown.*

SUITE B FLOOR PLAN 1,184 SQ FT

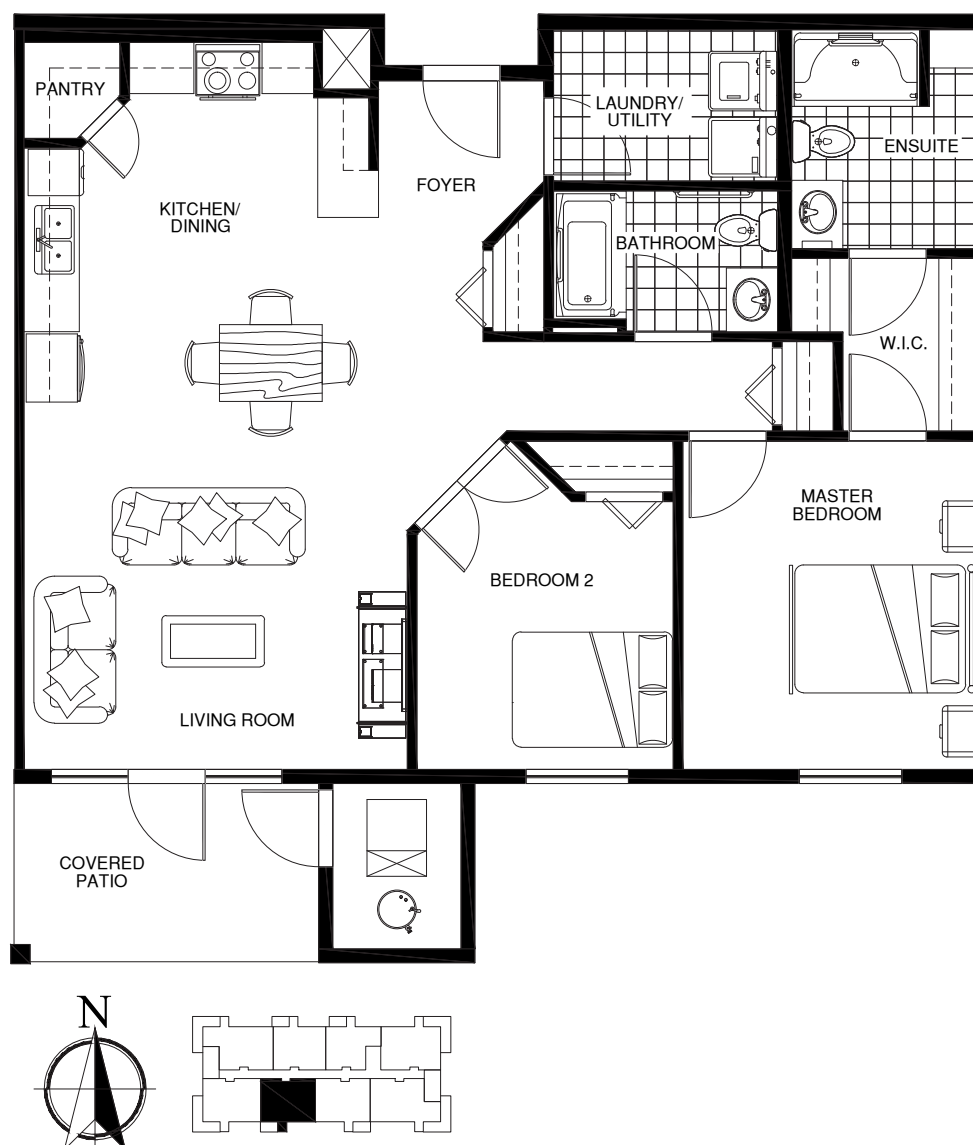
Suite Numbers: 203, 303, 403



*Note: Floor plans show approximate room sizes only.
Final designs may vary slightly from those shown.*

SUITE B FLOOR PLAN 1,184 SQ FT

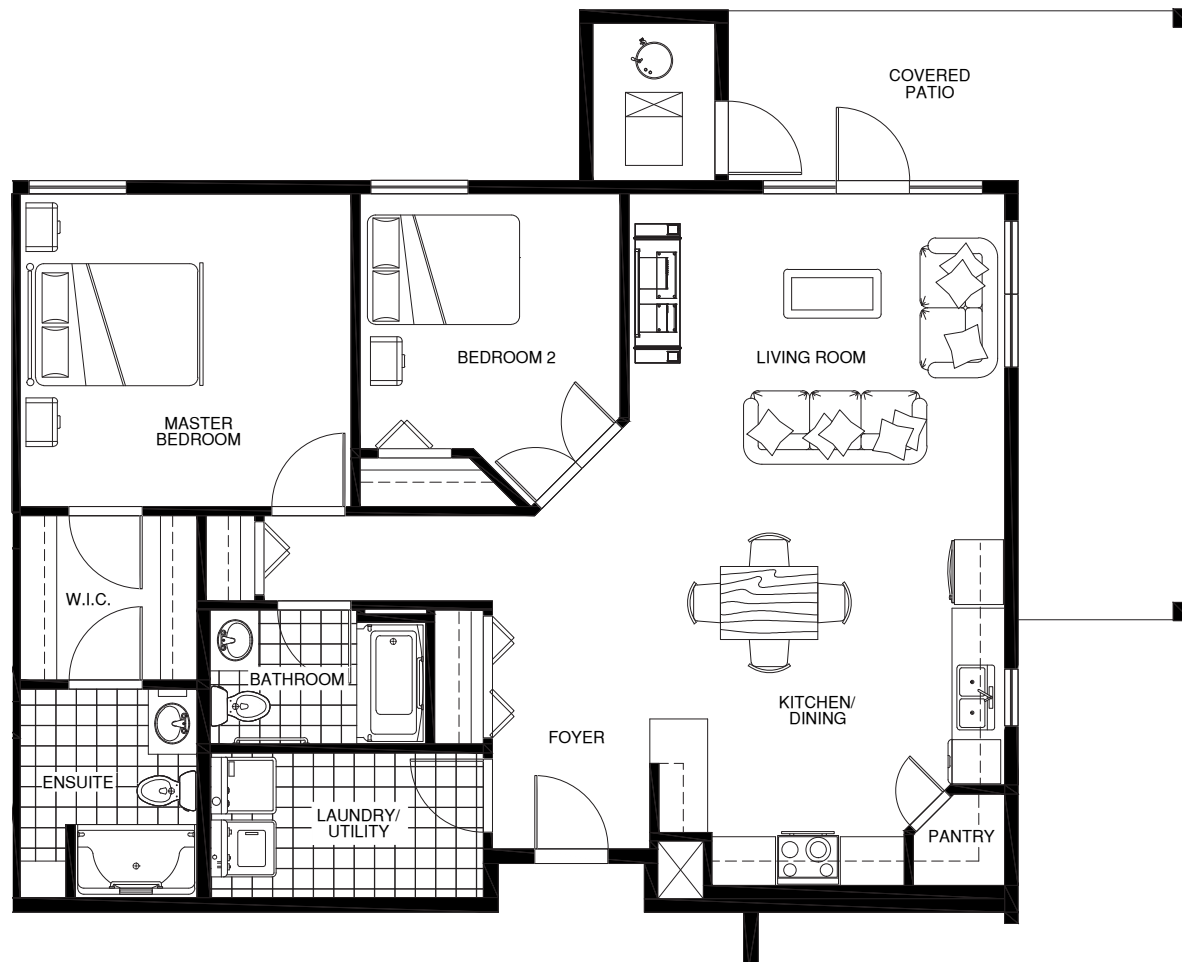
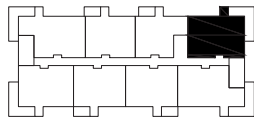
Suite Numbers: 205, 305, 405



*Note: Floor plans show approximate room sizes only.
Final designs may vary slightly from those shown.*

SUITE C FLOOR PLAN 1,283 SQ FT

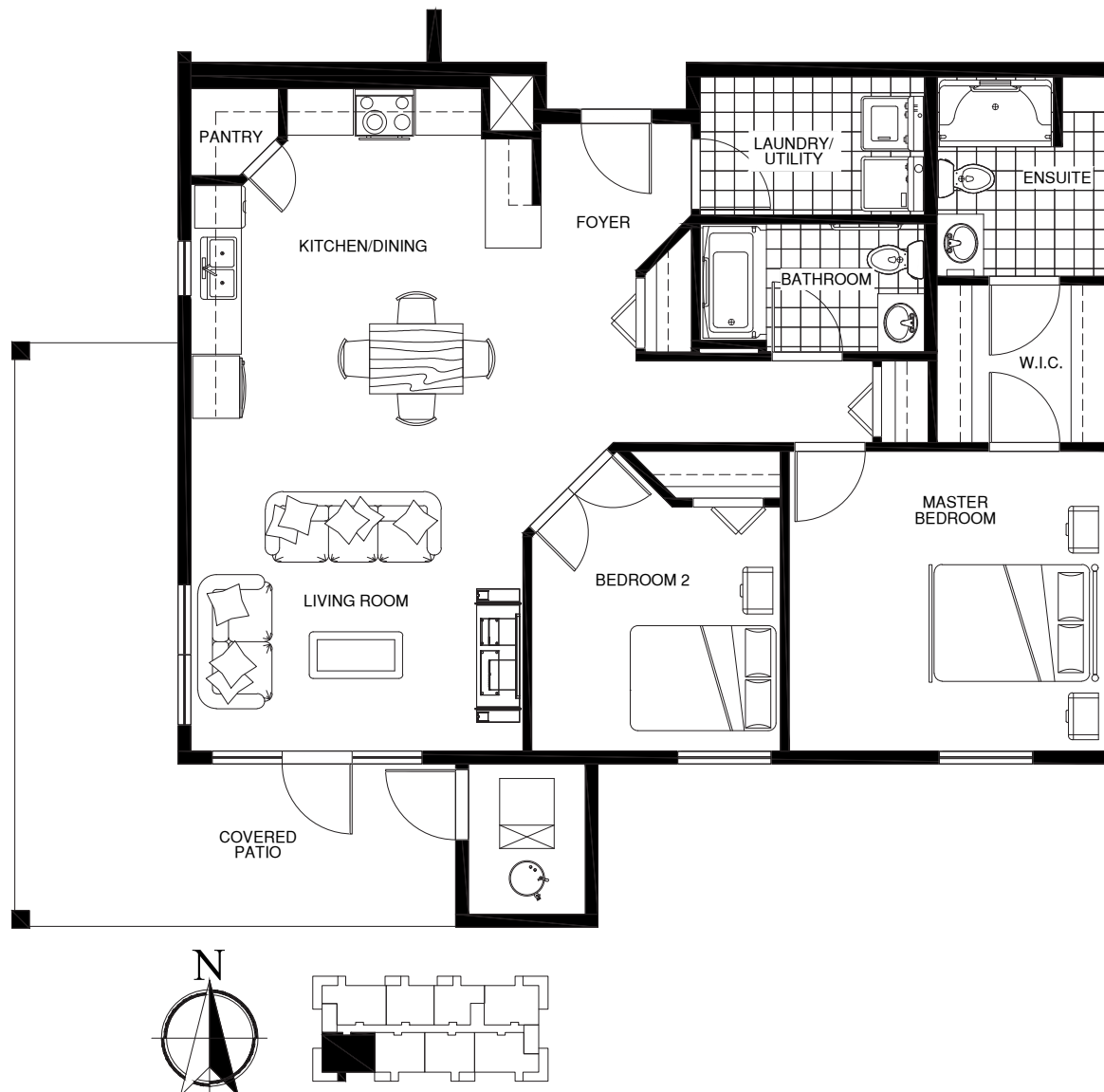
Suite Numbers: 202, 302, 402



*Note: Floor plans show approximate room sizes only.
Final designs may vary slightly from those shown.*

SUITE D FLOOR PLAN 1,249 SQ FT

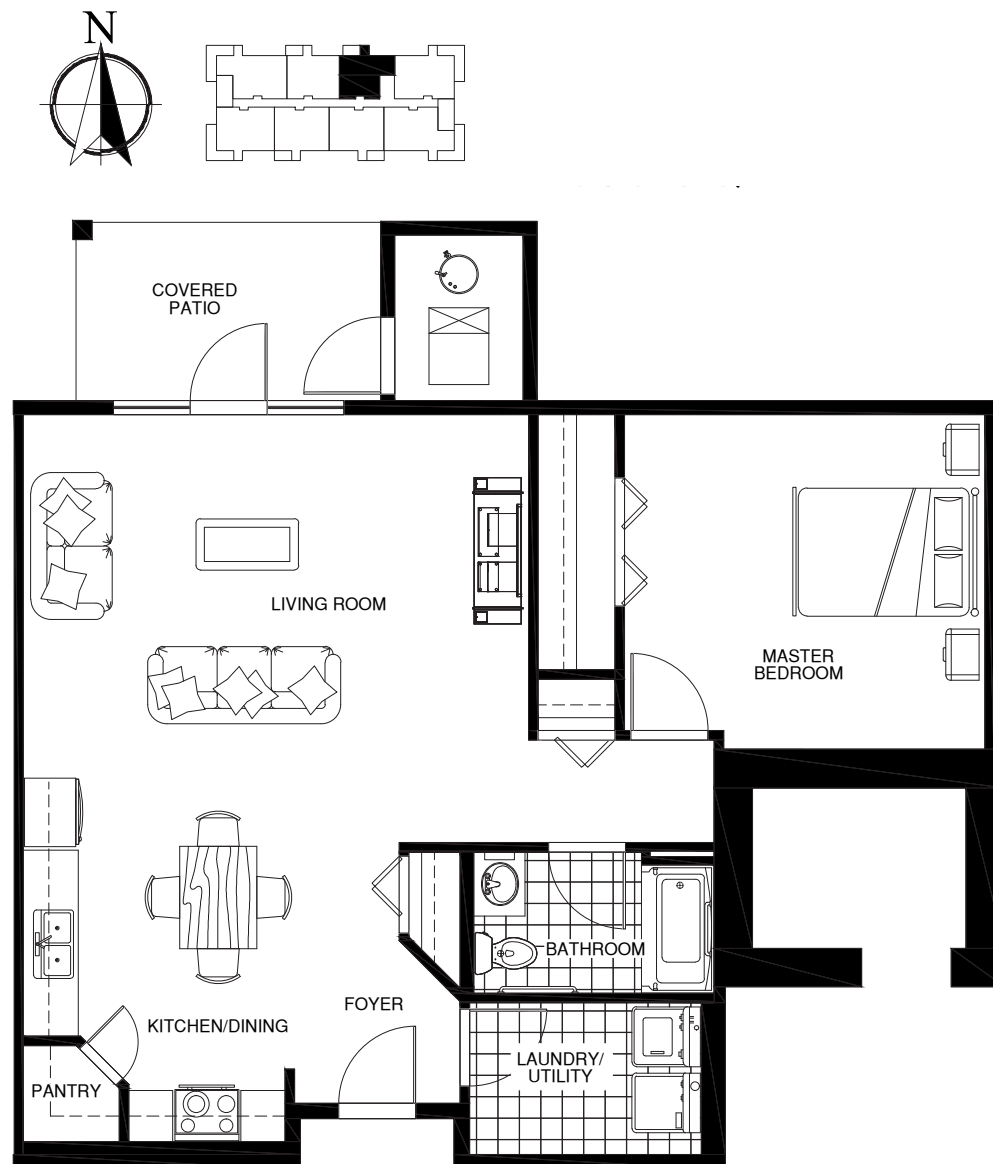
Suite Numbers: 207, 307, 407



*Note: Floor plans show approximate room sizes only.
Final designs may vary slightly from those shown.*

SUITE E FLOOR PLAN 1,030 SQ FT

Suite Numbers: 204, 304, 404

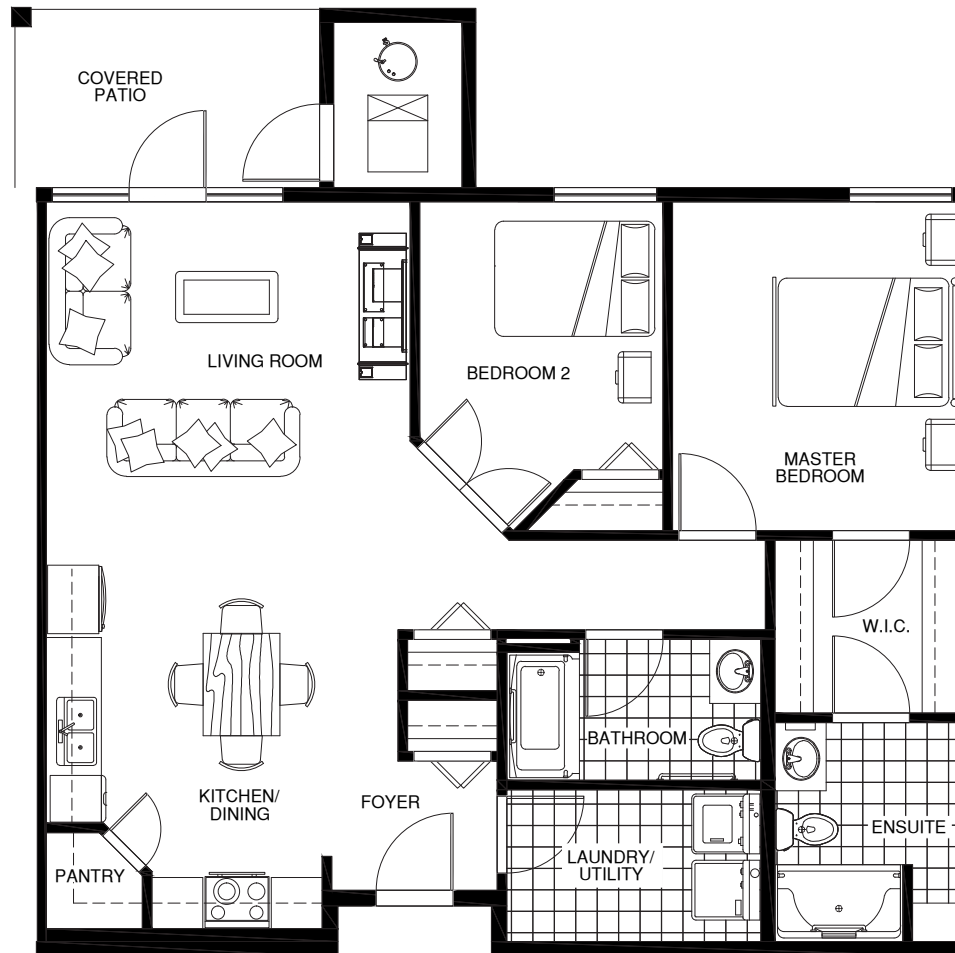
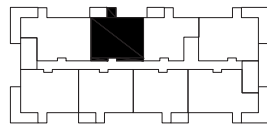


*Note: Floor plans show approximate room sizes only.
Final designs may vary slightly from those shown.*



SUITE F FLOOR PLAN 1,139 SQ FT

Suite Numbers: 206, 306, 406



*Note: Floor plans show approximate room sizes only.
Final designs may vary slightly from those shown.*

Terri Hetterly
306-249-1917

Erin Sackman
306-281-4475

CHATEAU VILLA

MARTENSVILLE, SK



BridgeRoad
DEVELOPMENTS LTD.

Terri Hetterly
306-249-1917



Erin Sackman
306-281-4475