

Welcome To Headingley!

Heartland
ESTATES



Welcome Home!

Spacious, well appointed apartment homes featuring:

Suite Features:

Ambient spacious suites with plenty of natural light
Large kitchens with walk-in pantry and full double sink
Individual temperature controlled suites with forced air electric finance for heating and air-conditioning
In suite laundry room with ample storage
Wide, wheel chair accessible bathrooms and hallways
GE Fridge, Range and Dishwasher included
Private Balcony for each suite with outdoor storage

Featured Amenities:

Central elevator for convenience and ease
One simple monthly payment includes heat, water, hydro and rent
Shared spaces for playing games, sharing hobbies and making new friends
Guest suite available for your overnight guests
Heated indoor parking and storage available
Free Wi Fi in the building
Common room with full kitchen available free of charge for your family gatherings and events
Ample visitor parking
Opportunity for excursions and special events
Congregate gatherings and events

Maintenance Free Lifestyle:

No yard or home maintenance to worry about
No condominium fees or building repairs costs to pay

Safety and Security:

Secured suites for personal safety and safe to leave for extended holidays
Safe, friendly community living
Interconnected fire alarm system
Security entrances controlled from each apartment
Firewalls built for your safety
Engineered sound walls



Cost Of Living In A House

Home Valued	\$ 250,000	\$ 300,000	\$ 350,000	My House
Property Taxes	\$ 2,660.00	\$ 3,290.00	\$ 3,880.00	_____
Heating	\$ 1,400.00	\$ 1,700.00	\$ 2,000.00	_____
Electrical	\$ 1,500.00	\$ 1,800.00	\$ 2,100.00	_____
Insurance	\$ 596.00	\$ 719.00	\$ 829.00	_____
Water	\$ 500.00	\$ 500.00	\$ 500.00	_____
Maintenance (mower, snow blower, shingles, flooring, paint, hot water tank, etc.)	\$ 4,600.00	\$ 5,500.00	\$ 6,000.00	_____
Lost Income (for Return on value of home @ 5%)	\$ 12,500.00	\$ 15,000.00	\$ 17,500.00	_____
<hr/>				
Total Costs per Year	\$ 23,756.00	\$ 28,509.00	\$ 32,809.00	_____
Total Costs Per Month	\$1,980.00	\$ 2,376.00	\$ 2,734.00	_____

Frequently Asked Questions

1. What is included in my rent?

One monthly payment will include heat, hydro, water, rent, taxes and maintenance. Each suite is furnished with a fridge, range and dishwasher and window coverings.

2. Is the \$1000 Suite Selection Deposit refundable?

Yes. The deposit is completely refundable once the tenancy lease is signed.

3. Is there heated indoor parking available?

Garage space, complete with additional storage is available for \$100 per month.

4. Is there outdoor parking available?

Yes, there are outdoor parking stalls available for approximately \$35 to \$40 monthly. Each stall is equipped with an electrical outlet.

5. Is there visitor parking?

Visitor parking is provided.

6. Are pets allowed?

One pet per suite is allowed providing it meets the requirements of the pet policy.

7. Are children allowed?

Yes of course. However while we are happy to see children visiting our residents and even staying for short stays, this is an Adult Community and it is against our policy to allow residents living with children or having them stay for extended periods.

Choosing YOUR Suite

A fully refundable deposit of \$1000 and a tenancy deposit agreement secures the suite of your choice.

Be sure to place your \$1000 deposit soon to secure your suite! Please make an appointment with one of our representatives for complete pricing information. We look forward to assisting you with every detail of your move!

For More Information, Please Contact:

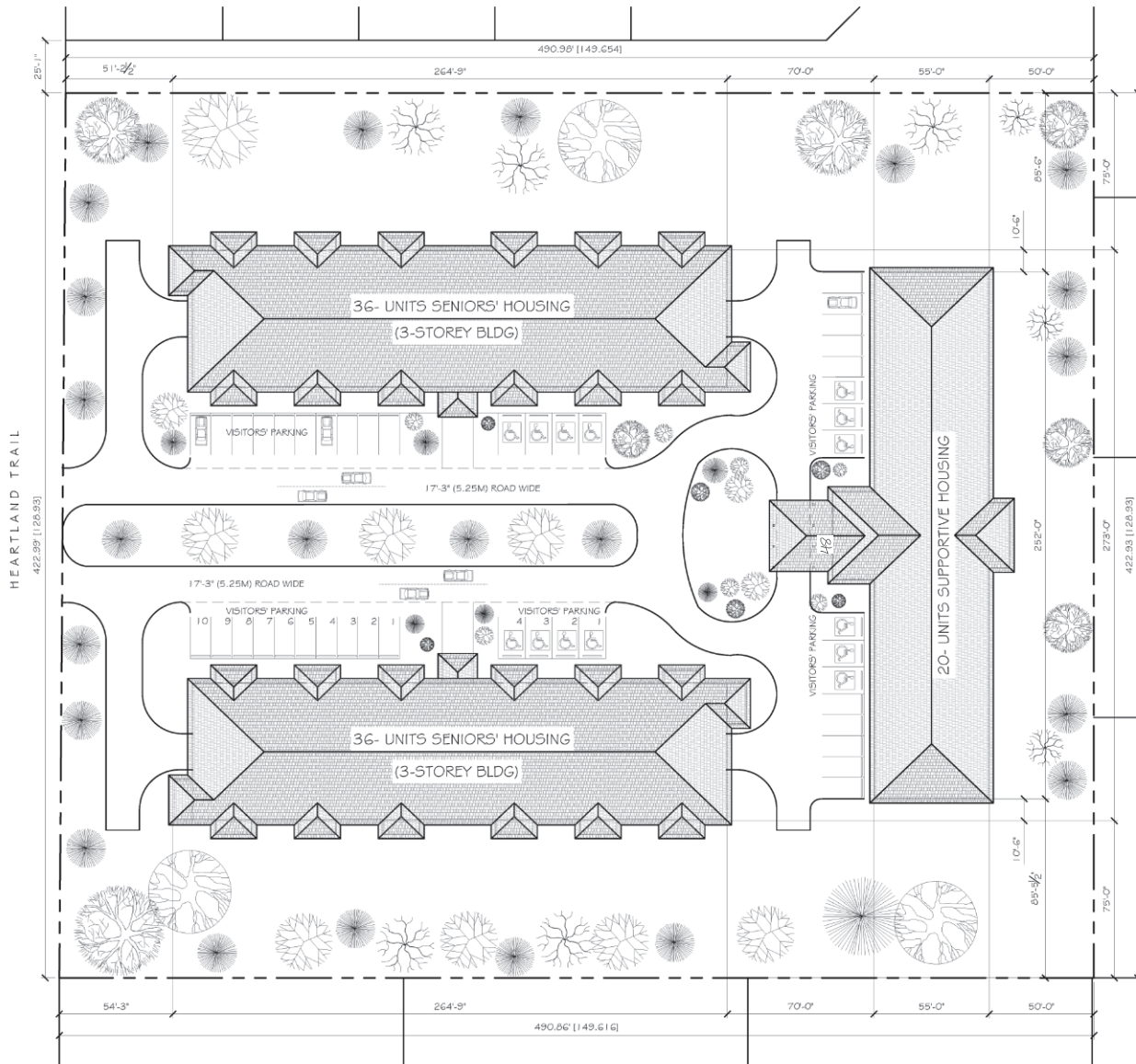
Susan Yakabowich Cell: 204-332-0509

Toll Free: 1-855-309-8297 Email: syakabowich@bridgeroad.ca

*Bridge***Road**
DEVELOPMENTS LTD.

www.bridgeroad.ca

Site Development Plan



For more information, please contact Susan Yakabowich,
 cell: 204-332-0509 toll free: 1-855-309-8297
 email syakabowich@bridgeroad.ca
 or visit www.bridgeroad.ca



First Floor Layout



Typ. Floor Plan - Suite A - Corner

Second Floor Layout



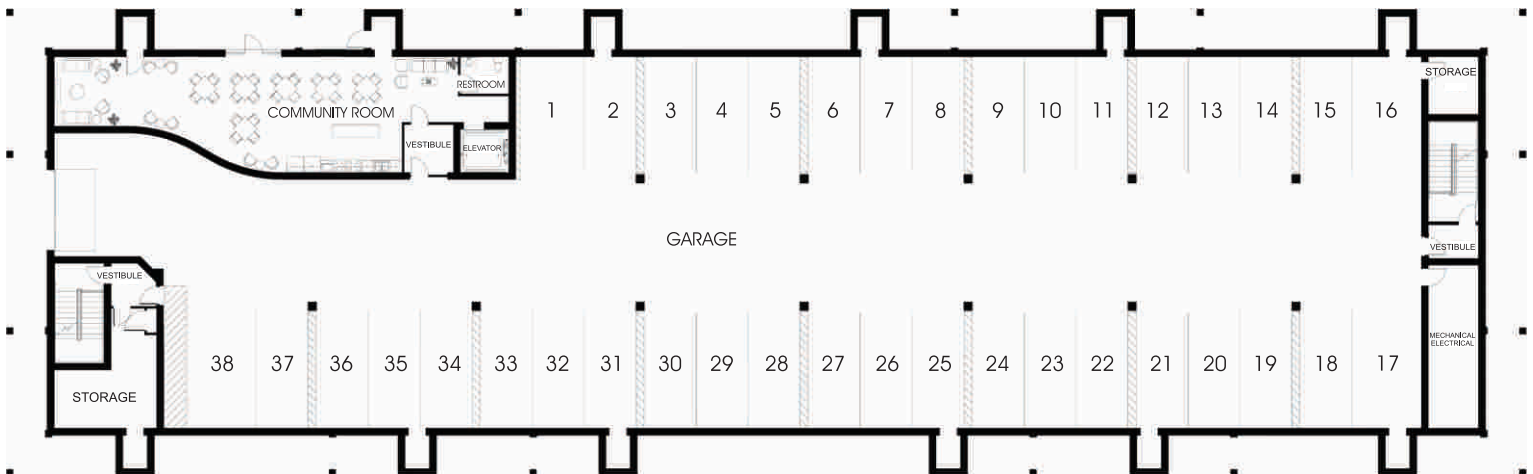
For more information, please contact Susan Yakabowich,
cell: 204-332-0509 toll free: 1-855-309-8297
email syakabowich@bridgeroad.ca
or visit www.bridgeroad.ca



Third Floor Layout



Garage Level

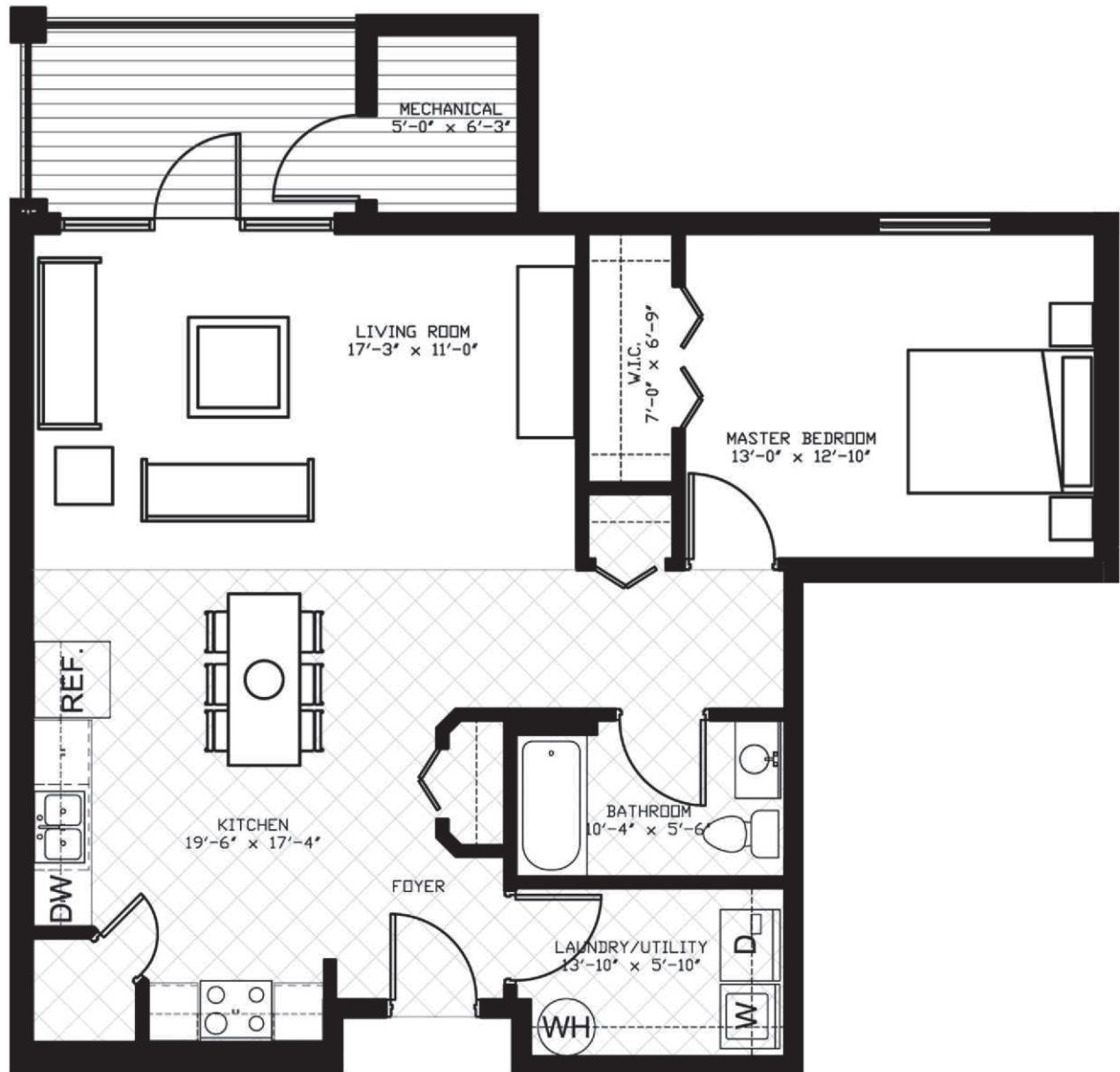


For more information, please contact Susan Yakabowich,
 cell: 204-332-0509 toll free: 1-855-309-8297
 email syakabowich@bridgeroad.ca
 or visit www.bridgeroad.ca



Suite E Floor Plan 1036 sq ft

Suite numbers: 103, 203, 303

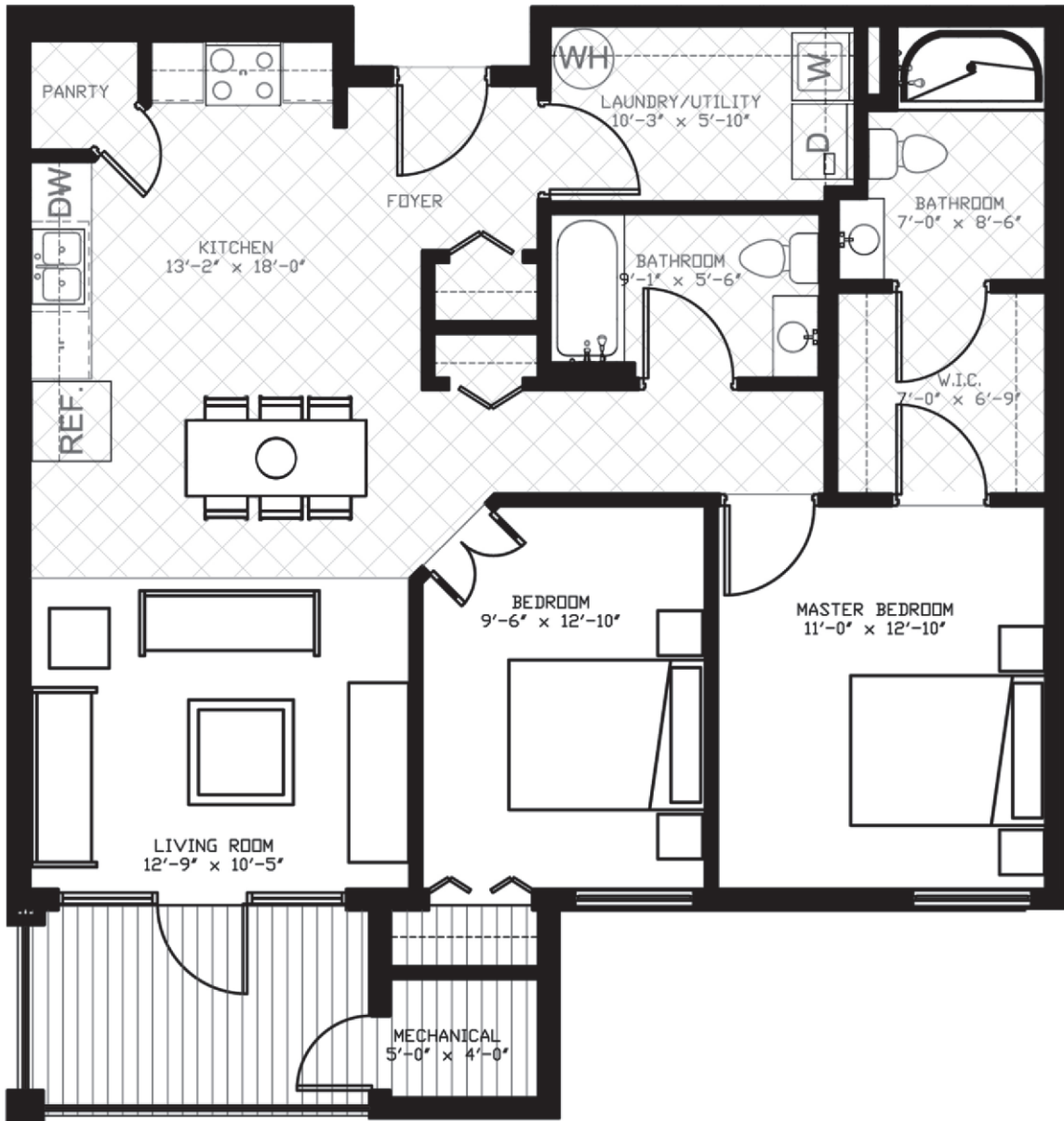


Floor plans show approximate room sizes only.
Final designs may vary slightly from those shown.



Suite F-1 Floor Plan 1085 sq ft

Suite numbers: 104, 204, 304

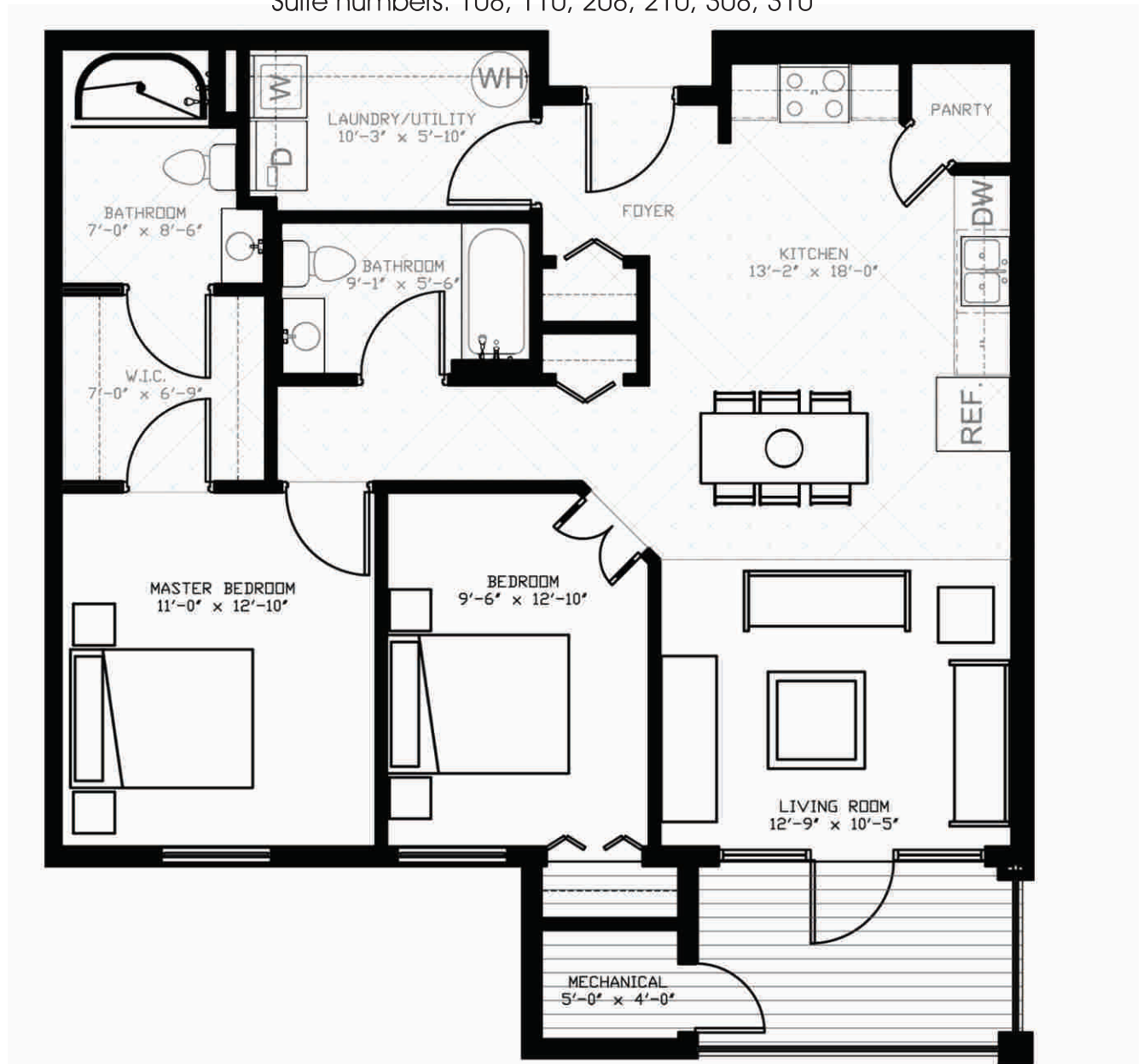


Floor plans show approximate room sizes only.
Final designs may vary slightly from those shown.



Suite F-2 Floor Plan 1085 sq ft

Suite numbers: 108, 110, 208, 210, 308, 310

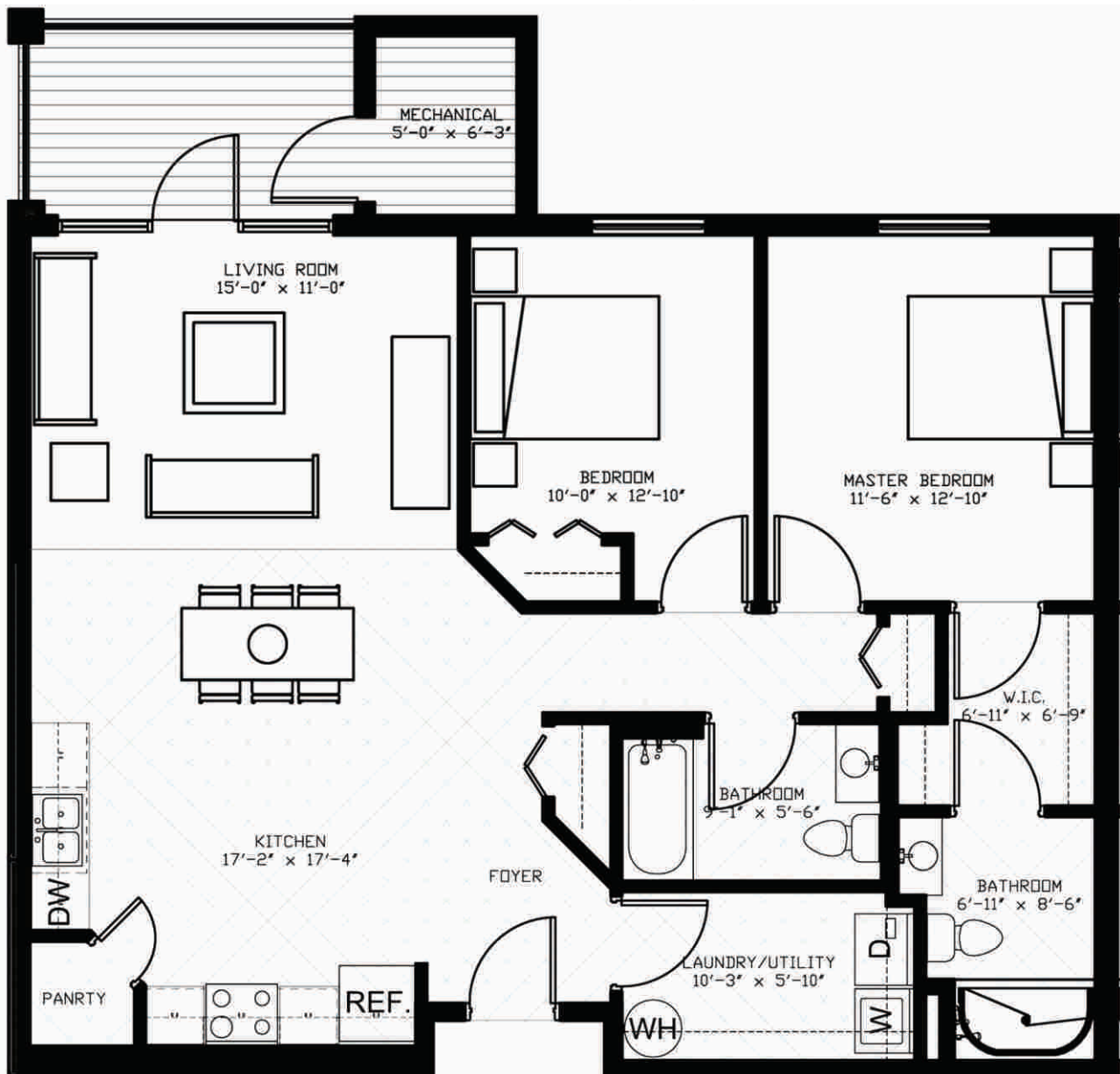


Floor plans show approximate room sizes only.
Final designs may vary slightly from those shown.



Suite B-1 Floor Plan 1183 sq ft

Suite numbers: 105, 205, 305



Floor plans show approximate room sizes only.
Final designs may vary slightly from those shown.



Suite B-2 Floor Plan 1183 sq ft

Suite numbers: 106, 107, 206, 207, 306, 307

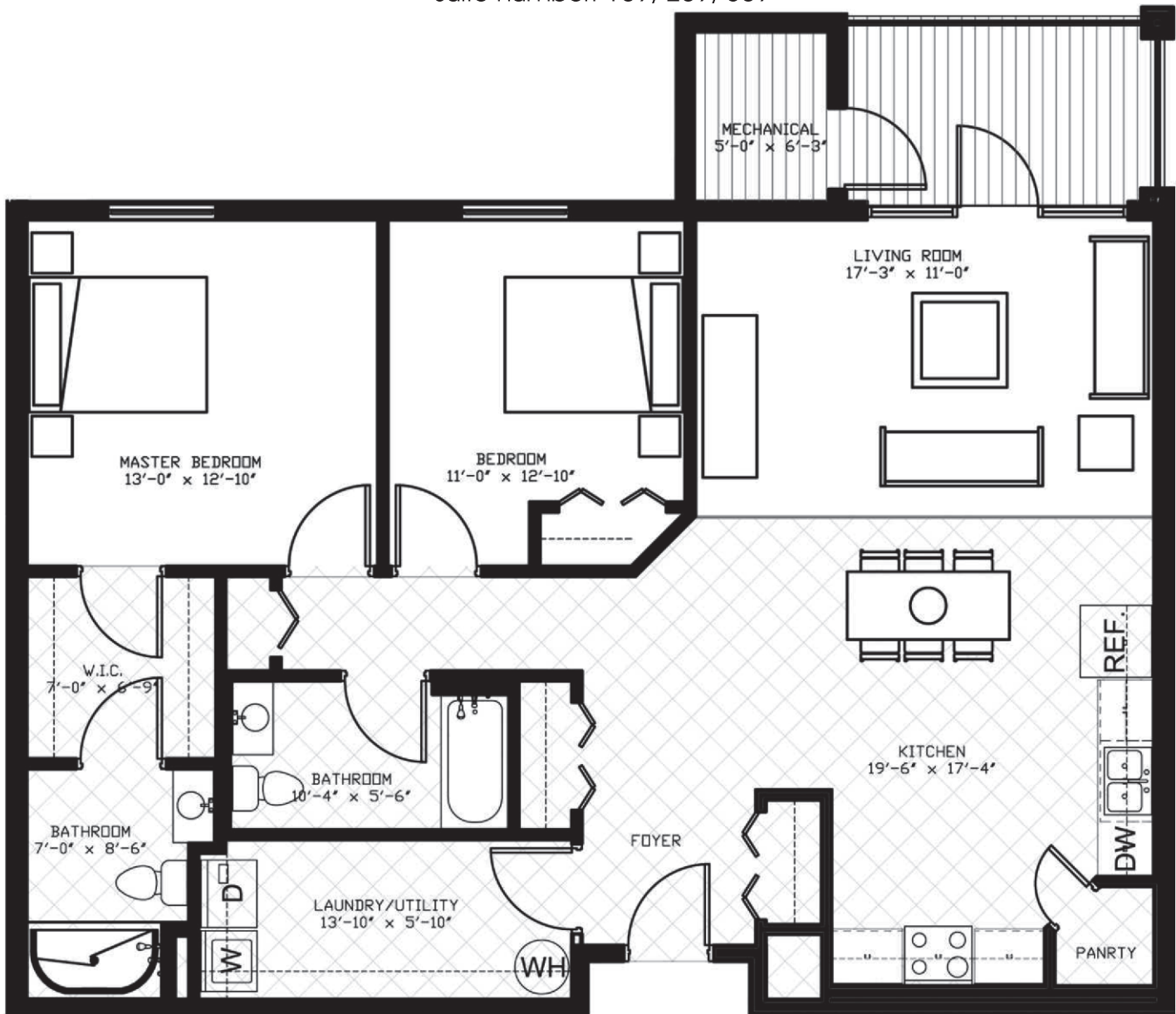


Floor plans show approximate room sizes only.
Final designs may vary slightly from those shown.



Suite D Floor Plan 1317 sq ft

Suite number: 109, 209, 309

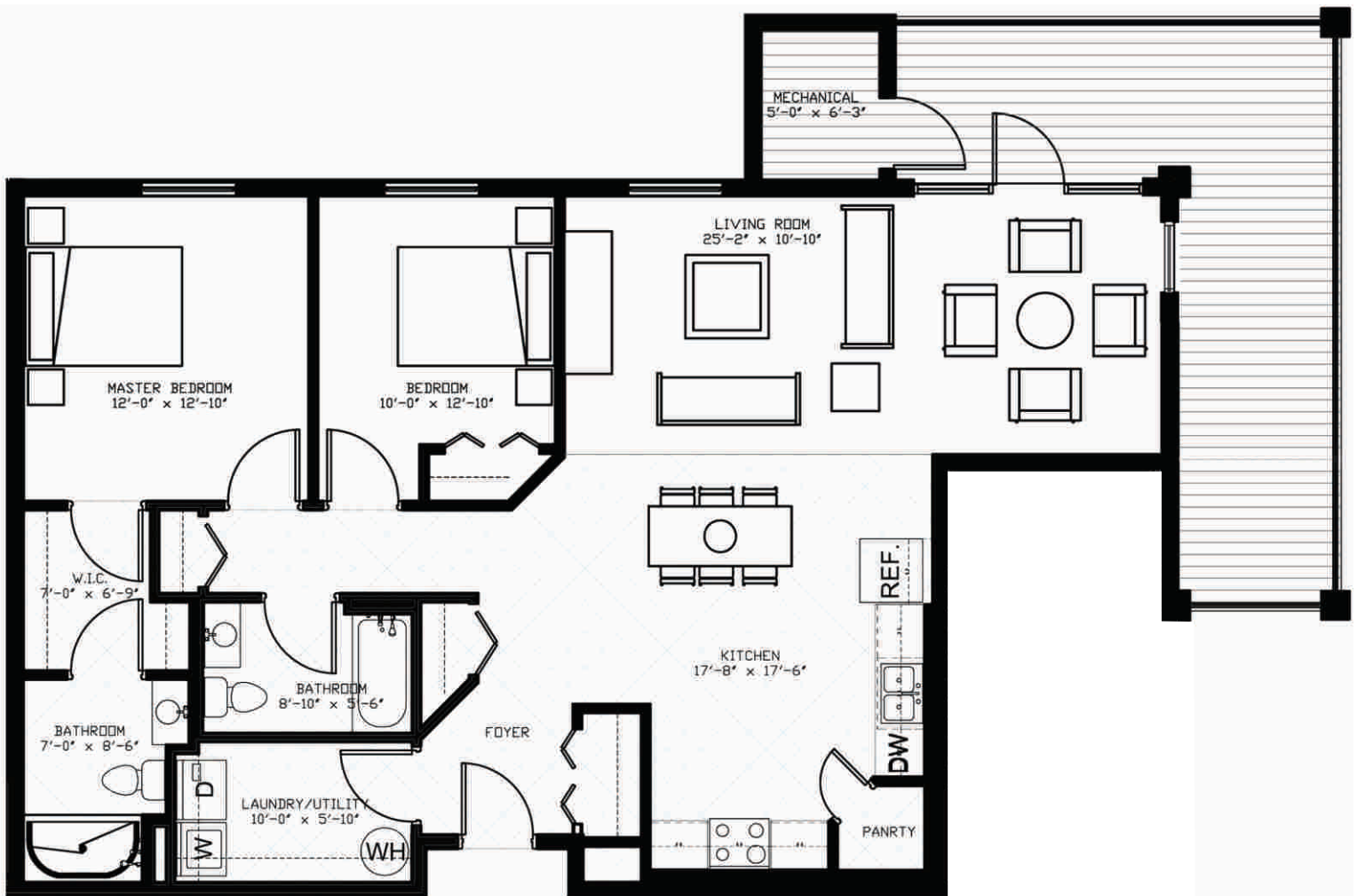


Floor plans show approximate room sizes only.
Final designs may vary slightly from those shown.



Suite A Floor Plan 1335 sq ft

Suite numbers: 102, 111, 202, 211, 302, 311

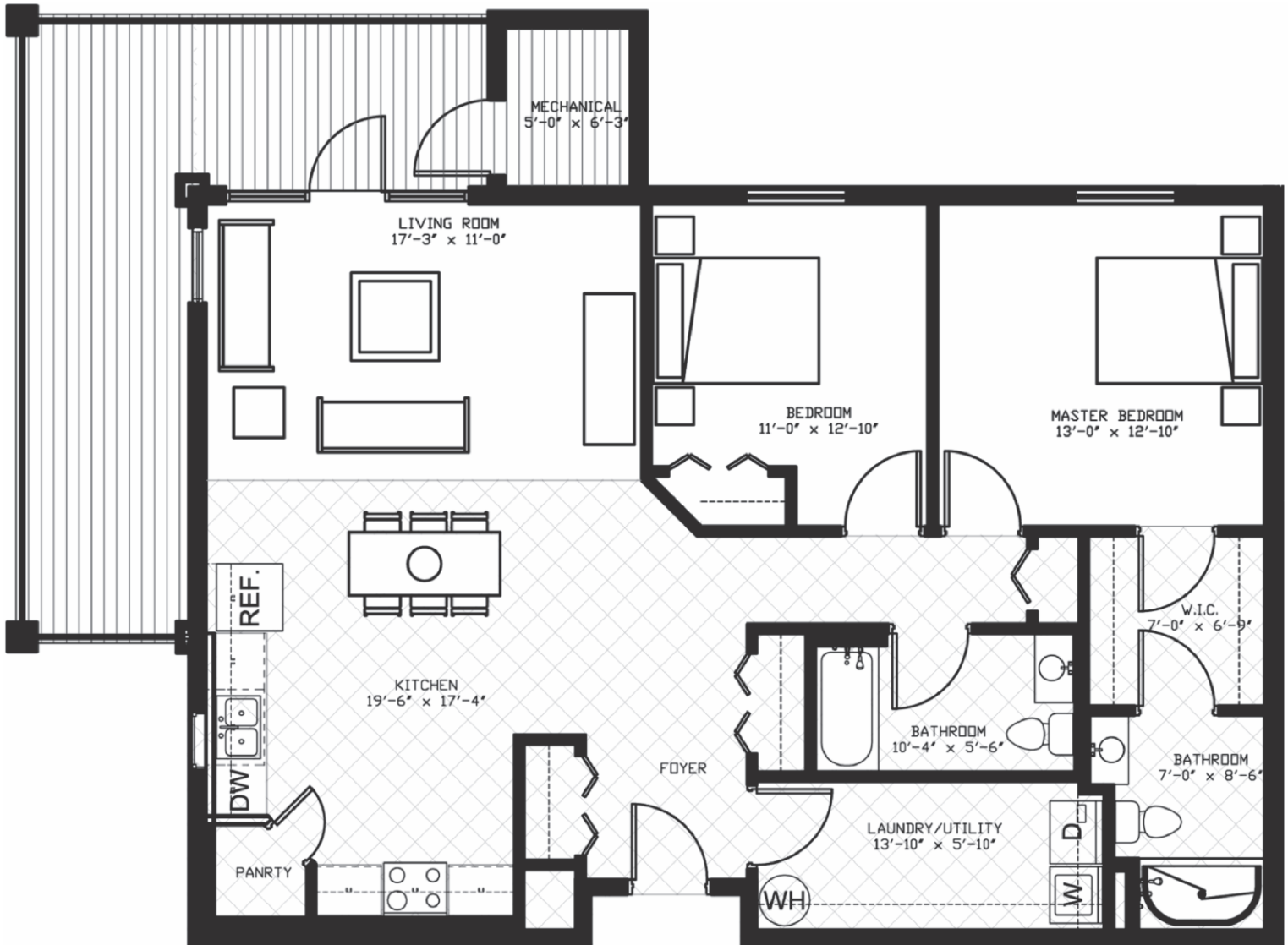


Floor plans show approximate room sizes only.
Final designs may vary slightly from those shown.



Suite C Floor Plan 1335 sq ft

Suite numbers: 101, 112, 201, 212, 301, 312



Floor plans show approximate room sizes only.
Final designs may vary slightly from those shown.

